

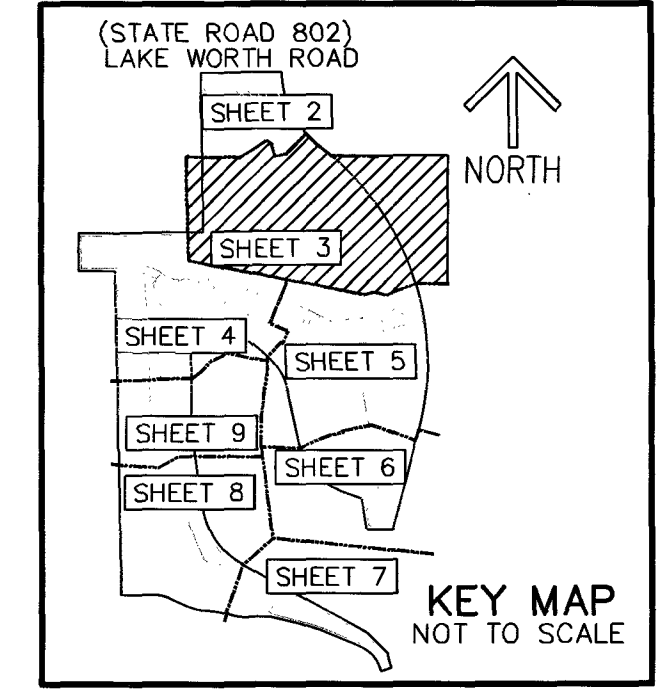
LEGEND/ABBREVIATIONS

- CL - CENTERLINE
- Δ - DELTA (CENTRAL ANGLE)
- (BT6) - BOUNDARY TRACT 6 (PLAT BOOK 29, PAGES 107-108)
- CB - CHORD BEARING
- CD - CHORD DISTANCE
- E - EASTING DISTANCE
- FND - FOUND
- L - ARC LENGTH
- LB - LICENSED BUSINESS
- LMAE - LAKE MAINTENANCE ACCESS EASEMENT
- LSE - LIFT STATION EASEMENT
- L.W.D.D. - LAKE WORTH DRAINAGE DISTRICT
- N - NORTHING (WHEN USED WITH COORDINATES)
- O.R.B. - OFFICIAL RECORD BOOK
- PBCUE - PALM BEACH COUNTY UTILITY EASEMENT
- PC - POINT OF CURVATURE
- PDE - PUBLIC DRAINAGE EASEMENT
- PT - POINT OF TANGENCY
- PNT - POINT OF NON-TANGENCY
- (PRAS) - PRIVATE RESIDENTIAL ACCESS STREET
- (P) - PALM BEACH GOLF CLUB ESTATES PLAT NO. 3 PLAT BOOK 29, PAGES 107-108
- R - RADIUS
- (R) - RADIAL LINE
- (RPB) - ROAD PLAT BOOK 1, PAGES 128-135 ROAD PLAT BOOK 5, PAGES 125-138
- R/W - RIGHT-OF-WAY
- PCP - DENOTES PERMANENT CONTROL POINT NAIL AND METAL DISK STAMPED "PCP LB3591"
- PRM - DENOTES PERMANENT REFERENCE MONUMENT SET 4" X 4" X 24" CONCRETE MONUMENT WITH ALUMINUM DISK STAMPED "C&W PRM LB3591"
- HC - DENOTES HORIZONTAL CONTROL POINT

THIS INSTRUMENT PREPARED BY
DAVID P. LINDLEY
OF
CAULFIELD & WHEELER, INC.
SURVEYORS - ENGINEERS - PLANNERS
7900 GLADES ROAD, SUITE 100
BOCA RATON, FLORIDA 33434 - (561)392-1991
CERTIFICATE OF AUTHORIZATION NO. LB3591

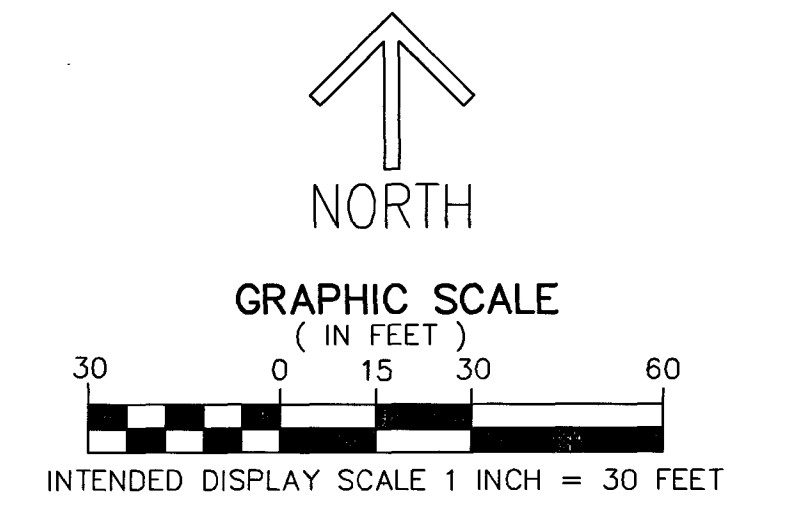
LAKESHORE AT THE FOUNTAINS

BEING A REPLAT OF A PORTION OF THE GOLF COURSE TRACT, PALM BEACH GOLF CLUB ESTATES PLAT NO. 3, AS RECORDED IN PLAT BOOK 29, PAGES 107 AND 108 OF THE PUBLIC RECORDS OF PALM BEACH COUNTY, FLORIDA, LYING IN SECTIONS 27 AND 28, TOWNSHIP 44 SOUTH, RANGE 42 EAST, PALM BEACH COUNTY, FLORIDA

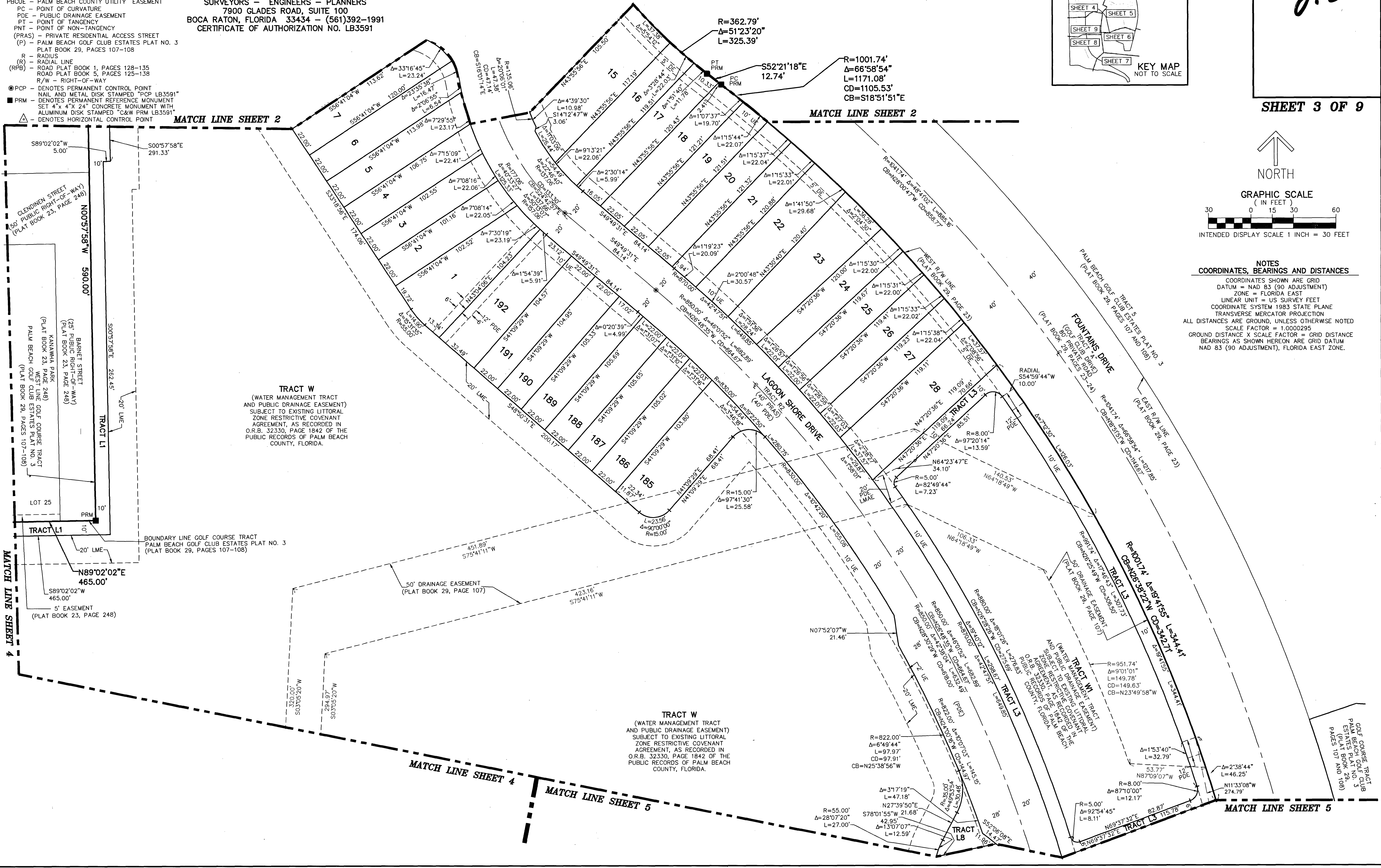


22

SHEET 3 OF 9



NOTES
COORDINATES, BEARINGS AND DISTANCES
COORDINATES SHOWN ARE GRID
DATUM = NAD 83 (90 ADJUSTMENT)
ZONE = FLORIDA EAST
LINEAR UNIT = US SURVEY FEET
COORDINATE SYSTEM 1983 STATE PLANE
TRANSVERSE MERCATOR PROJECTION
ALL DISTANCES ARE GROUND, UNLESS OTHERWISE NOTED
SCALE FACTOR = 1.0000295
GROUND DISTANCE X SCALE FACTOR = GRID DISTANCE
BEARINGS AS SHOWN HEREON ARE GRID DATUM
NAD 83 (90 ADJUSTMENT), FLORIDA EAST ZONE.



TRACT W
(WATER MANAGEMENT TRACT AND PUBLIC DRAINAGE EASEMENT) SUBJECT TO EXISTING LITTORAL ZONE RESTRICTIVE COVENANT AGREEMENT, AS RECORDED IN O.R.B. 32330, PAGE 1842 OF THE PUBLIC RECORDS OF PALM BEACH COUNTY, FLORIDA.

TRACT W
(WATER MANAGEMENT TRACT AND PUBLIC DRAINAGE EASEMENT) SUBJECT TO EXISTING LITTORAL ZONE RESTRICTIVE COVENANT AGREEMENT, AS RECORDED IN O.R.B. 32330, PAGE 1842 OF THE PUBLIC RECORDS OF PALM BEACH COUNTY, FLORIDA.

GOLF COURSE TRACT PALM BEACH PLAT NO. 3 (PLAT BOOK 29, PAGES 107 AND 108)

MATCH LINE SHEET 2

MATCH LINE SHEET 2

MATCH LINE SHEET 4

MATCH LINE SHEET 4

MATCH LINE SHEET 5

MATCH LINE SHEET 5